

Heating Fire Safety



Follow these heating tips to help maintain a fire-safe home this winter.



Space Heater

- Keep anything that can burn, such as bedding, clothing and curtains, at least 3 feet away from the heater.
- Make sure the heater has an automatic shut-off, so if it tips over, it shuts off.
- Turn heaters off when you go to bed or leave the room.
- Plug portable heaters directly into outlets and never into an extension cord or power strip.
- Only use portable heaters from a recognized testing laboratory.



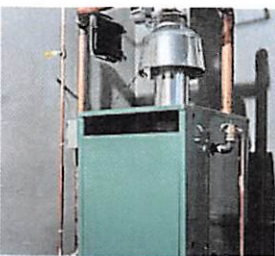
Fireplace

- Keep a glass or metal screen in front of the fireplace to prevent embers or sparks jumping out.
- Do not burn paper in your fireplace.
- Put the fire out **before** you go to sleep or leave your home.
- Put ashes in a metal container with a lid, outside, at least 3 feet from your home.



Wood Stove

- Make sure your wood stove is 3 feet from anything that can burn.
- Do not burn paper in your wood stove.
- Put the fire out **before** you go to sleep or leave your home.
- Have your chimney inspected and cleaned each year by a professional.



Furnace

- Have your furnace inspected each year.
- Keep anything that can burn away from the furnace.



Kerosene Heater

- Only use kerosene heaters from a recognized testing laboratory.
- Make sure the heater has an automatic shut-off, so if it tips over, it shuts off.
- Refuel your **cooled** heater outside.

For more information and free resources, visit www.usfa.fema.gov/prevention/outreach.